

CONSOLIDATED

TREATMENT SYSTEMS
www.consolidatedtreatment.com



* Note- 4080-Series control panel is in a 12X10X6 NEMA 4 Box

4080 Control panel is an Outdoor audio visual alarm with 5 breakers (2-10 Amp, and 2-20 Amp, and a push to reset breaker for the UV). Can be ordered with or without a dosing timer. Has the capability to run (2) pumps. The panel is Failsafed (locks out a pump in case of aeration or disinfection failure). Panel is also Telemetry ready. All wire connections are clearly labeled with terminal blocks (no wire nuts required). Has a test and silence switch, and indicator lights on the door. Comes with a 2 year Manufacturers warranty. (Available with optional event counter)



4080
Series

Products

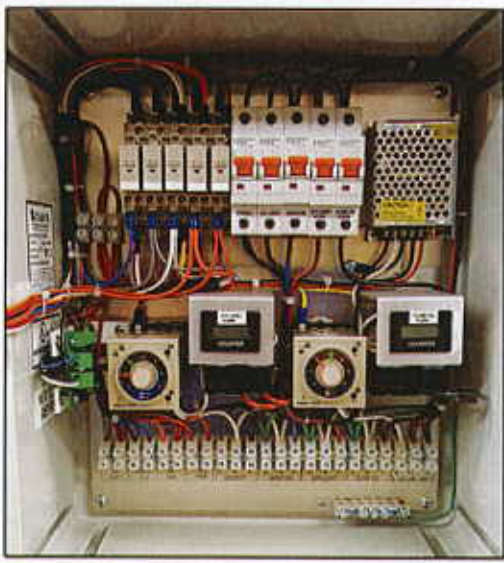
MULTI-FLO,
ENVIROGUARD,
NAYADIC

CONSOLIDATED

TREATMENT SYSTEMS
www.consolidatedtreatment.com



4080-2 Series outdoor audio visual alarm comes with 5 breakers (3-10 Amp, and 2-20 Amp). This control panel has one or two Omron timers depending on the application with event counters for each. It can be ordered either telemetry ready or fail-safed which will lock out the pump in case of an aeration or disinfection failure. All wire connections are clearly labeled with terminal blocks (no wirenuts required). The door has a test and silence switch to either test the alarm (must hold switch for 10 seconds) or silence it and Indicator lights to notify where any alarm condition is happening. Comes with a 2-year manufacturers warranty



* NOTE: 4080-2 Alarm is in a 14X12X6 NEMA 4 Box



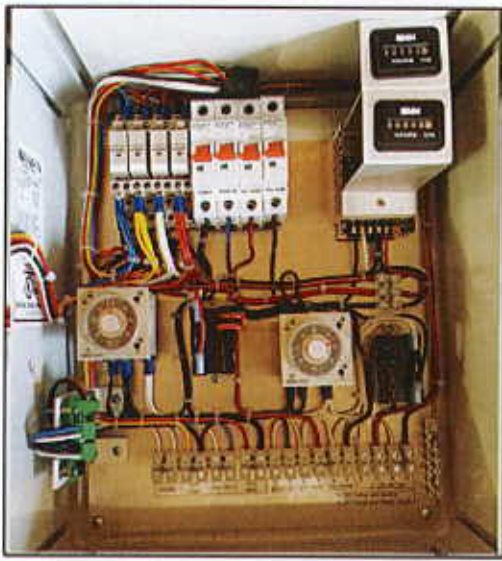
4080-2	Products
	MULTI-FLO, And ENVIROGUARD

CONSOLIDATED

TREATMENT SYSTEMS
www.consolidatedtreatment.com



4080-1 Series outdoor audio visual alarm comes with 4 breakers (2-10 Amp, and 2-20 Amp). This control panel has two Omron timers with event counters for each. It can be ordered either telemetry ready or fail-safed which will lock out the pump in case of an aeration failure. All wire connections are clearly labeled with terminal blocks (no wirenuts required). The door has a test and silence switch to either test the alarm (must hold switch for 10 seconds) or silence it, and Indicator lights to notify where any alarm condition is happening. Comes with a 2-year manufacturers warranty



* NOTE: 4080-1 Alarm is in a 14X12X6 NEMA 4 Box



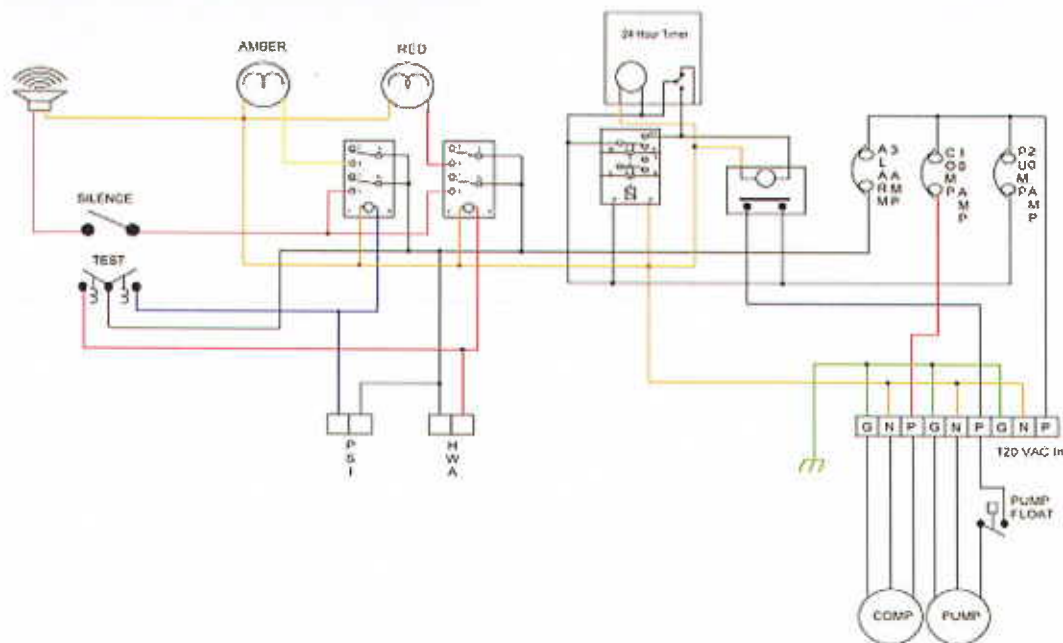
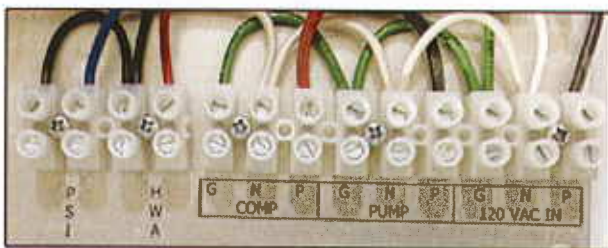
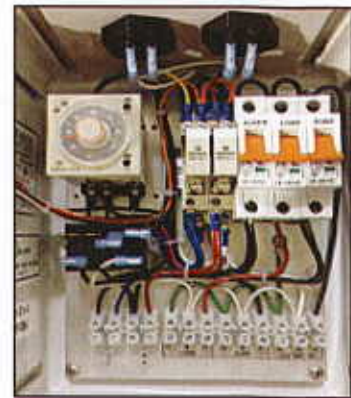
4080-1	Products
	MULTI-FLO, And ENVIROGUARD

The M6-EV control panel requires a dedicated 20 amp breaker from the residence. Mount the control panel with the supplied hardware and connect the incoming power to the control panel and run power wires and alarm wires out to the unit and compressor.



The control panel has two indicator lights on top for easy diagnosis. Yellow light means a problem with the compressor, and the Red light means high water in the system.

All wire hook-ups are clearly labeled



	TITLE			4060-EV
	SCALE	DATE	DESIGN NO.	SHEET
B		102711RW	0	
			SHEET 1 of 1	